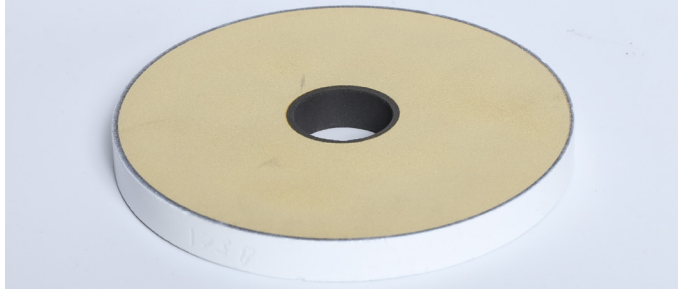


# METROSIL SERIES 300-A & 600-A VARISTORS



Salient Dimensions (mm)		A	B	C	D	E	F	G	H
600-A/S		152	32	101	178	107	19	M12	M6
300-A/S	Up to 310 Vdc	76	33	62	82	55	19	M10	M5
	Over 310 Vdc	76	33	62	114	55	19	M10	M5

## INTRODUCTION

This data sheet describes the largest Metrosil voltage dependent resistor discs, having diameters up to 150mm. The product range is concentrated on two basic discs: the 300-A, an annular disc with outer diameter of 75mm and the 600-A, with outer diameter of 150mm. In addition, a range of 400-A (100mm) series discs is available to special order.

## TYPES

Both 300-A and 600-A types can be supplied either as loose discs or as assemblies. The standard assembly utilises a central stud, which holds the discs and their contact plates as necessary for connections and the whole assembly is carefully tightened to a torque, which gives good electrical contact without damaging the discs.

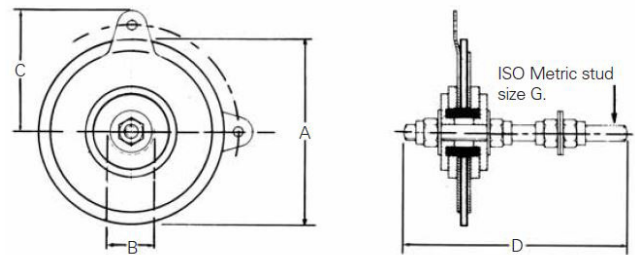
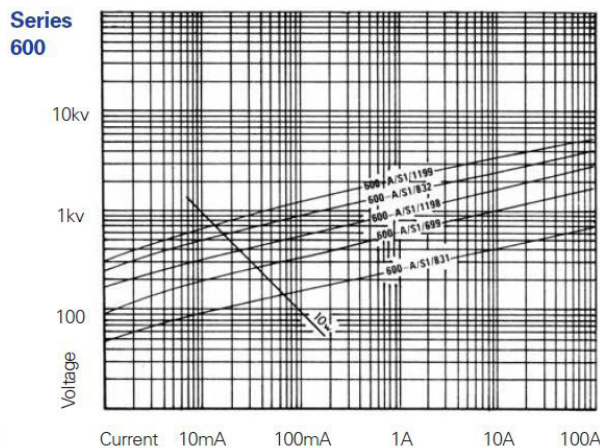
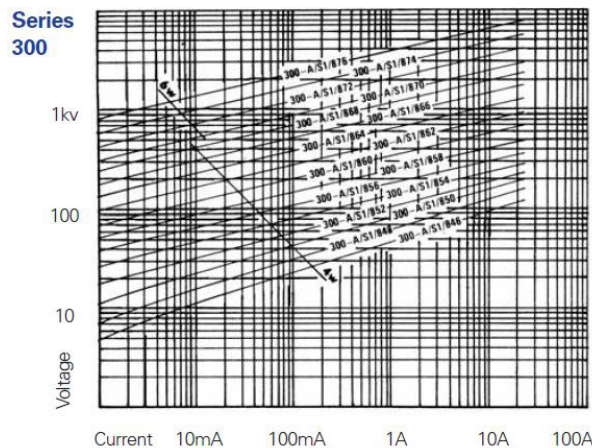
## SPECIFICATION

The data quoted in the table overleaf is intended as an indication of the available characteristics. For larger order quantities, it is advisable to contact our sales team, as an alternative specification may be better suited to the application. This is particularly the case with 600-A/S discs, which are often designed to customer requirements.

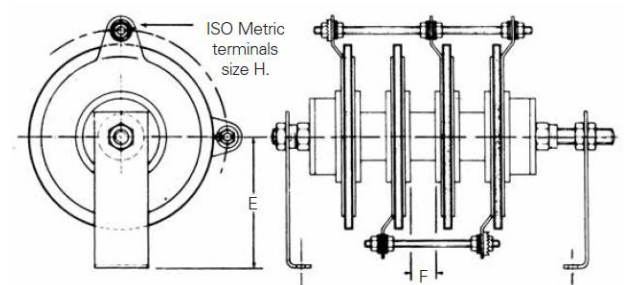
## SELECTION

For guidance in interpreting the data and selecting a suitable device, please refer to our selection and ordering guide, or contact Metrosil sales.

## VOLTAGE/CURRENT CHARACTERISTICS



300-A/S1 & 600-A/S1



300-A/S/4P & 600-A/S/4P

# METROSIL SERIES 300-A & 600-A VARISTORS

## SELECTION CHART\*

Type Number	Nominal Dimensions		Continuous Operating Conditions			Typical Protection Levels		Rated Power Dissipation	Rated Energy Absorption
	Diameter (mm)	Thickness (mm)	Rated Voltage		Current at dc voltage (mA±50%)	Peak Volts	Peak Amps	W	J
			dc (V)	ac (V)					
600-A/S1/1199	152	25.4	680	600	10	5,000	50	20	69900
600-A/S1/832	152	19.1	550	480	15	4,000	50	20	52400
600-A/S1/1198	152	12.7	400	350	20	2,500	50	20	34900
600-A/S1/699	152	7.6	250	220	30	1,500	50	20	21000
600-A/S1/831	152	3.8	125	110	50	750	50	20	10500
300-A/S1/876	76	26.2	1000	850	2.5	5,400	5	10	15800
300-A/S1/874	76	21.8	770	650	3.4	3,800	5	10	13200
300-A/S1/872	76	17.7	600	500	4.7	2,800	5	10	10700
300-A/S1/871	76	15.2	515	440	5	2,350	5	8	9200
300-A/S1/870	76	12.7	450	380	5.6	2,350	10	8	7700
300-A/S1/868	76	10.2	350	290	4.7	1,900	10	8	6100
300-A/S1/866	76	9.1	275	230	6.3	1,400	10	8	5500
300-A/S1/865	76	6.9	240	205	7	1,200	10	8	4200
300-A/S1/864	76	6.9	220	185	8.2	1,100	15	8	4200
300-A/S1/862	76	5.2	165	140	9.4	850	15	6	3100
300-A/S1/860	76	5.2	125	110	14	580	15	6	3100
300-A/S1/858	76	3.7	97	83	18	400	10	6	2200
300-A/S1/856	76	2.4	75	63	24	295	10	6	1500
300-A/S1/854	76	2.4	57	48	30	235	10	6	1500
300-A/S1/852	76	1.5	45	38	45	180	10	6	910
300-A/S1/850	76	1.5	36	27	60	155	10	6	910
300-A/S1/848	76	1.5	27	23	62	125	10	6	910
300-A/S1/846	76	1.5	22	19	94	90	10	6	910

\* The above table presents the most commonly used types of Metrosil 300-A and 600-A varistors, however many others can be manufactured on request.

Please contact our sales team with your requirements and we will provide you with the necessary specification.

### SALES ENQUIRIES

Tel: +44 (0)161 864 5456

e-mail: metrosilsales@mimaterials.com

### TECHNICAL ENQUIRIES

Tel: +44 (0)161 864 5462

e-mail: metrosiltech@mimaterials.com

a product of  M&I MATERIALS

