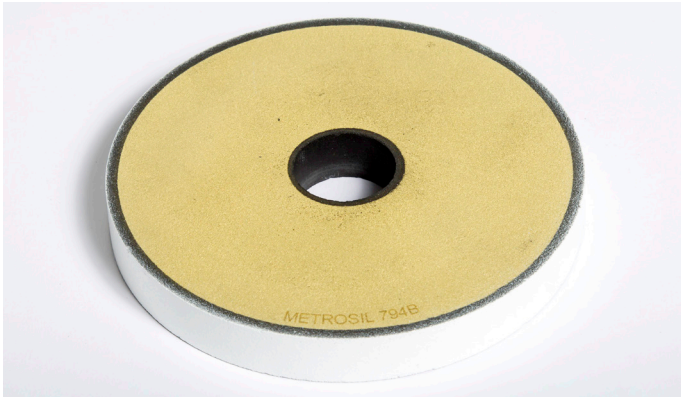


METROSIL SERIES 100-A & 175-A VARISTORS



INTRODUCTION

This data sheet describes the two disc series 100-A and 175-A, which are based on annular discs having diameters of 26mm and 45mm respectively.

TYPES

Both series can be supplied loose or as complete assemblies designated 100-A/S and 175-A/S. These are illustrated with their outline dimensions. Type 100-A/S can be supplied as multiple disc units with discs connected in series, parallel, star or delta configuration. Brackets can be supplied if required.

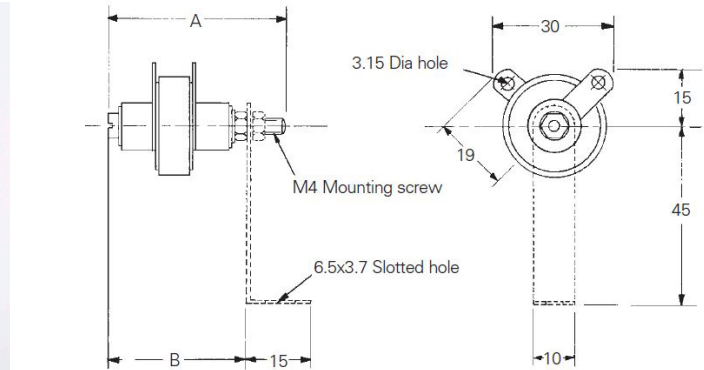
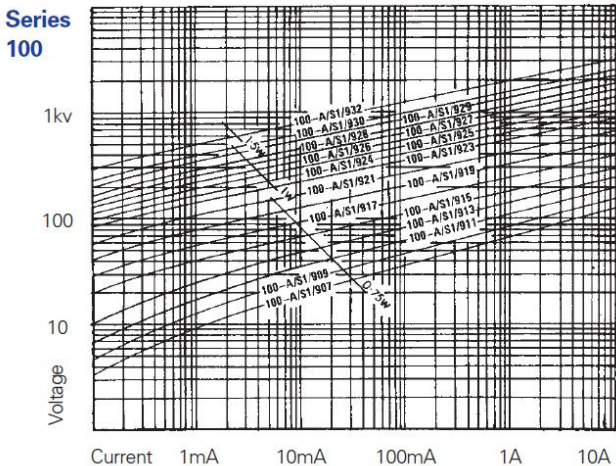
SPECIFICATION

The table overleaf presents the data for the most commonly used discs. The capacities of the types can be extended by using assemblies having more than one disc, connected as appropriate to the application.

SELECTION

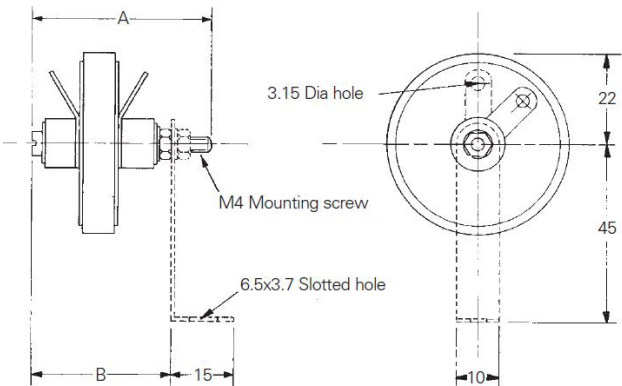
For guidance in interpreting the data and selecting a suitable device, please refer to the selection and ordering guide, or contact Metrosil sales.

VOLTAGE/CURRENT CHARACTERISTICS



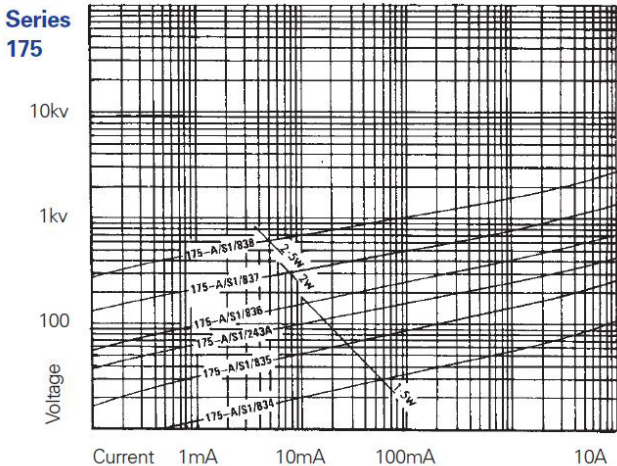
100-A/S1 ASSEMBLY

Dimension A: Up to 275 Vdc 43mm Over 275 Vdc 53mm
Dimension B: Disc thickness + 27mm



175-A/S1 ASSEMBLY

Dimension A: Up to 275 Vdc 43mm Over 275 Vdc 53mm
Dimension B: Disc thickness + 27mm



METROSIL SERIES 100-A & 175-A VARISTORS

SELECTION CHART*

Type Number	Nominal Dimensions		Continuous Operating Conditions			Typical Protection Levels		Rated Power Dissipation	Rated Energy Absorption
	D (mm)	Thickness (mm)	Rated Voltage		Current at dc voltage (mA±50%)	Peak Volts	Peak Amps	W	J
			dc (V)	ac (V)					
175-A/S1/838	45	15.3	500	425	2.2	2300	5	3.0	3420
175-A/S1/837	45	7.6	250	210	3.5	1300	7.5	2.5	1710
175-A/S1/836	45	4.1	125	110	6.0	650	7.5	2.0	910
175-A/S1/243A	45	3.8	90	75	7.0	350	5	2.0	850
175-A/S1/835	45	1.9	50	43	14.0	200	5	2.0	420
175-A/S1/834	45	1.8	25	22	28.0	100	5	2.0	400
100-A/S1/932	26	14.5	515	440	1.2	2500	2	2.0	1050
100-A/S1/930	26	11.5	400	335	1.1	1950	2	1.5	800
100-A/S1/929	26	9.6	350	290	1.3	1650	2	1.5	690
100-A/S1/928	26	9.1	310	260	1.4	1500	3	1.5	640
100-A/S1/927	26	7.9	275	230	1.6	1350	3	1.5	550
100-A/S1/926	26	6.9	240	205	1.7	1150	3	1.5	490
100-A/S1/925	26	6.9	220	185	2.2	1000	3	1.75	470
100-A/S1/924	26	5.6	190	160	2.3	860	3	1.25	400
100-A/S1/923	26	5.1	165	140	2.5	720	3	1.25	350
100-A/S1/921	26	3.8	125	110	2.5	550	3	1.0	260
100-A/S1/919	26	2.8	97	83	3.1	380	2	1.0	200
100-A/S1/917	26	2.8	75	63	4.3	290	2	1.0	200
100-A/S1/915	26	2.0	57	48	6.0	210	2	0.85	140
100-A/S1/913	26	1.4	44	37	7.5	170	2	0.85	100
100-A/S1/911	26	1.3	35	30	9.0	130	2	0.85	90
100-A/S1/909	26	1.6	27	23	14.0	100	2	0.85	110
100-A/S1/907	26	1.2	22	19	19.0	80	2	0.85	85

* The above table presents the most commonly used types of Metrosil 100-A and 175-A varistors, however many others can be manufactured on request.

Please contact our sales team with your requirements and we will provide you with the necessary specification.

SALES ENQUIRIES

Tel: +44 (0)161 864 5456

e-mail: metrosilsales@mimaterials.com

TECHNICAL ENQUIRIES

Tel: +44 (0)161 864 5462

e-mail: metrosiltech@mimaterials.com

a product of  **M&I MATERIALS**

Any recommendation or suggestion relating to the use, storage, handling or properties of the products supplied by M&I Materials Ltd, or any member of its group, either in sales and technical literature or in response to a specific enquiry or otherwise, is given in good faith but it is for the customer to satisfy itself of the suitability of the product for its own particular purposes and to ensure that the product is used correctly and safely in accordance with the manufacturer's written instructions. © M&I Materials Ltd.

metrosil.com